

Contents of Package:

- DWL-120 11Mbps Wireless USB Adapter
- Printed Quick Installation Guide
- CD with Manual and Drivers

If any of the above items are missing, please contact your reseller.

1

Installing the Driver

Turn “**On**” your computer. Insert the driver CD for the DWL-120 Wireless USB Adapter into the CD-ROM drive. The screen shown below will appear.

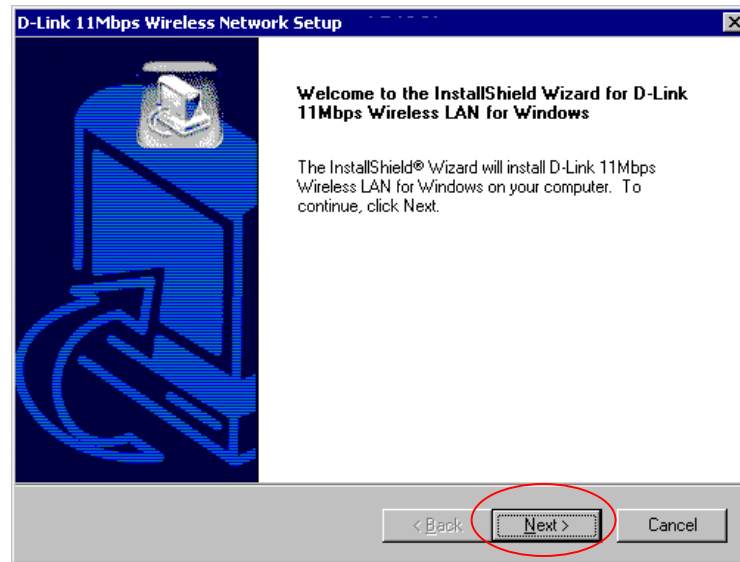


Click “Install Driver 2000/Me/98.”

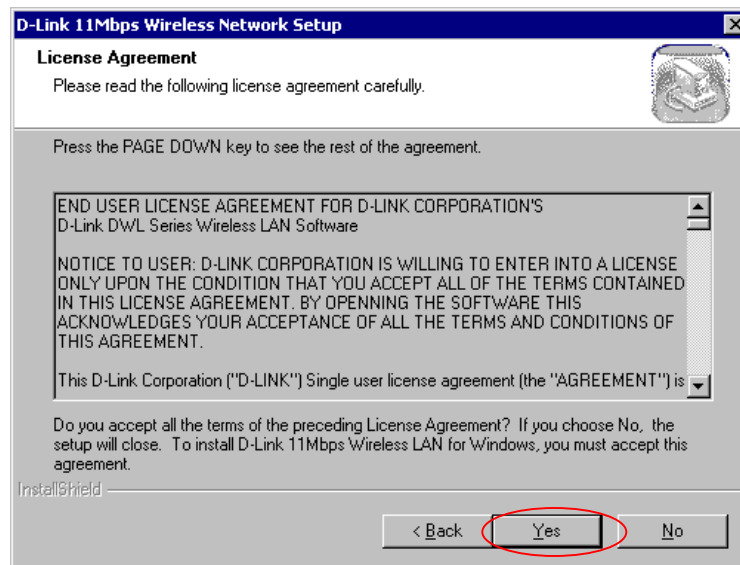
1

Installing the Driver (continued)

The “Welcome” screen, shown below, will appear.



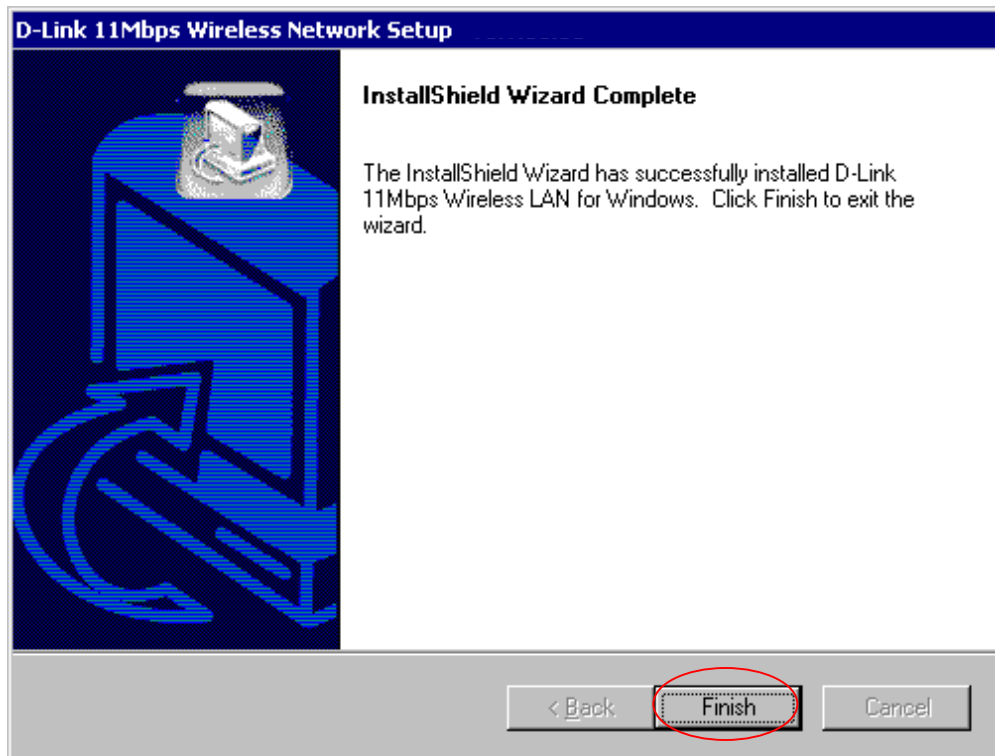
Click “Next.”



Click “Yes” to accept the License Agreement.

1

Installing the Driver (*continued*)



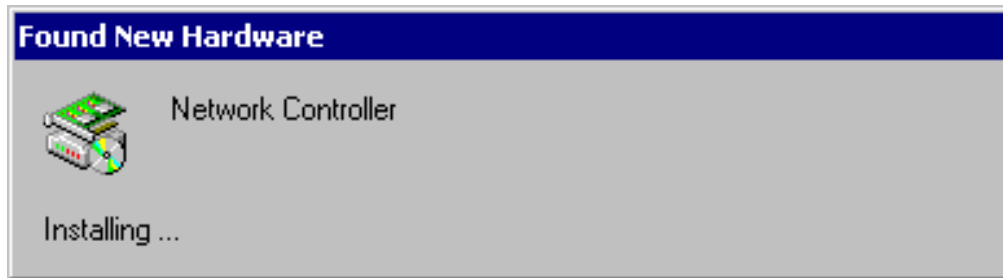
The driver installation is complete. Click “Finish.”

(Important: Please Restart the computer and plug in the USB Adapter before proceeding to Step 2.)

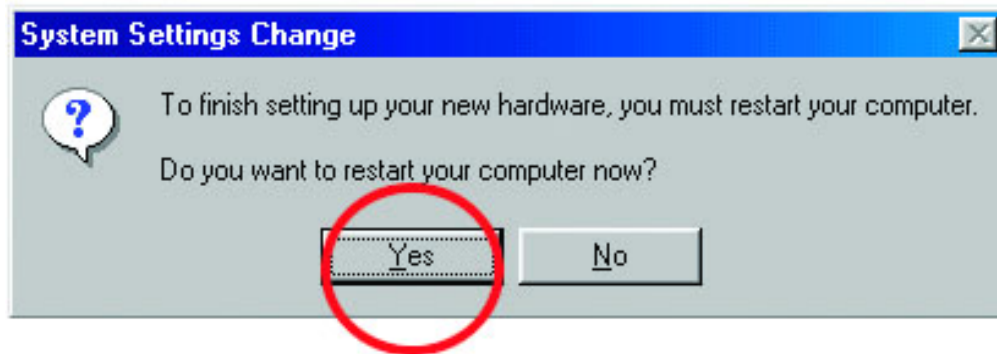
2

Installing the DWL-120 USB Adapter

Windows will recognize the USB adapter and automatically detect the driver. (If Windows does not automatically recognize the driver, please install the driver manually. Please see **Appendix A** in this guide for more information.)



The installation of the DWL-120 Wireless USB Adapter is complete.



Windows ME and Windows 98 users will be prompted to restart the computer.

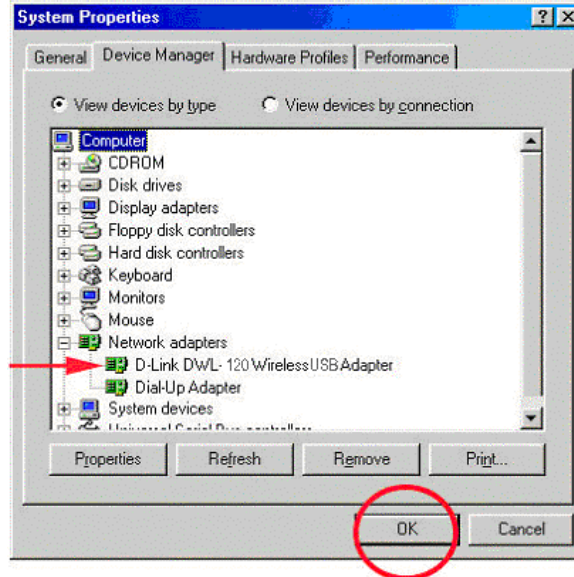
Click “Yes.”

Windows 2000 users, please **restart** your computer.

3

Checking the Installation

Go to **Start > Settings > Control Panel > System > Device Manager**



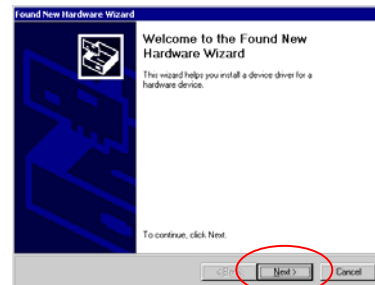
To check to see if the installation of the DWL-120 was successful, scroll down in the “**Device Manager**” window and click on “**Network Adapters.**” You have a successful installation when “**D-Link DWL-120 Wireless USB Adapter**” appears as shown above.

Appendix A

Manually Installing the Drivers

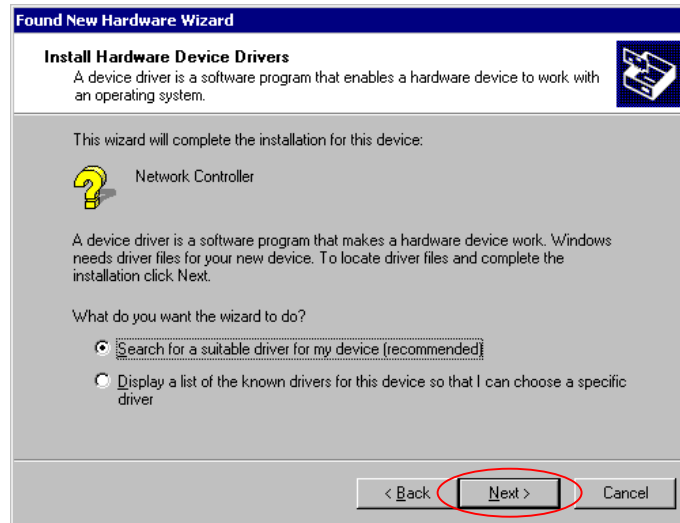
If Windows does not automatically recognize the drivers, go to **Control Panel > select Add/Remove New Hardware.** The screen to the right will appear.

Click “**Next.**”

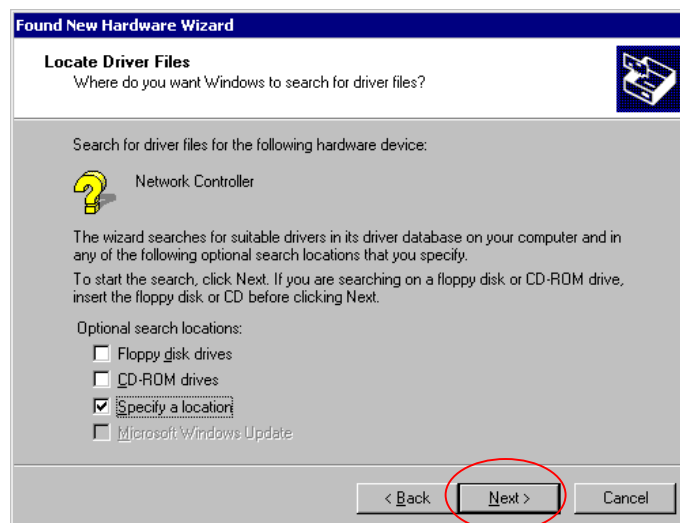


Appendix A (continued)

Manually Installing the Drivers (continued)



Click “Next.”

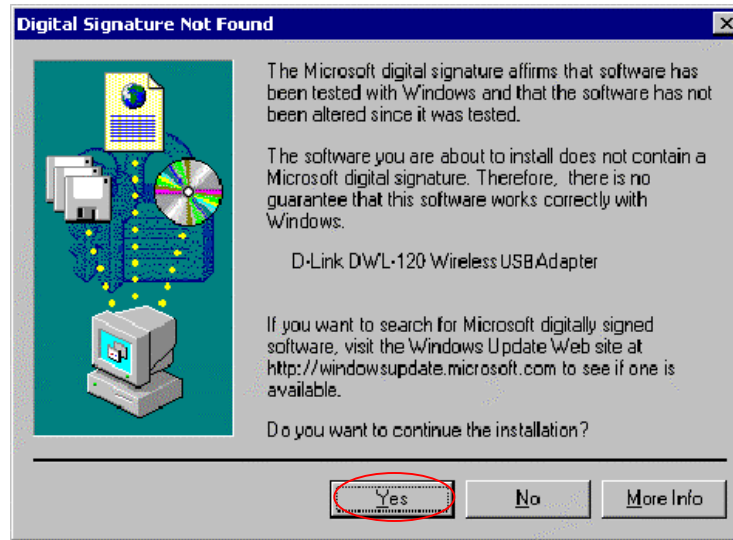


Click “Next.”

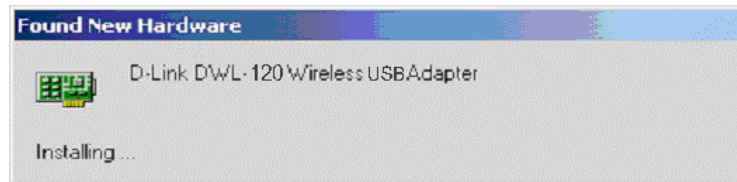
Select the CD-ROM drive (e.g., **D:** if **D** is the letter representing the CD-ROM drive.)

Appendix A (continued)

When Windows 2000 and ME locate the correct drive, the following screen will appear.



Click "Yes" to complete the installation.




Restart your computer.

Appendix B

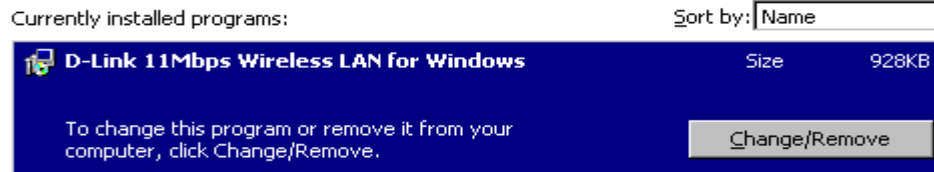
Uninstalling the DWL-120 Wireless USB Adapter

1. Please quit the Configuration Utility and other open applications.

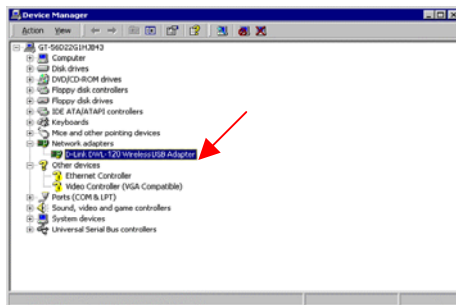
(Right-click on the icon in the lower right corner of the tray bar . Quit the Configuration utility when prompted.)

Appendix B (continued)

2. Go to **Start > Settings > Control Panel > Add/Remove Programs**.
Remove “D-Link 11Mbps Wireless LAN for Windows.”



3. Click **“Change/Remove.”**
4. Go to **System Properties > Hardware > Device Manager > Network Adapters**.
Right-click on “D-Link DWL-120 Wireless PCI Adapter.”
Select **“Uninstall.”**



5. Finally, click **“OK.”**
The **Uninstall** is complete.



Technical Support

You can find the most recent software and user documentation on the **D-Link** website. **D-Link** provides free technical support for customers within the United States for the duration of the warranty on this product. U.S. customers can contact **D-Link** technical support through our web site or by phone.

D-Link Technical Support over the Telephone:

(800) 758-5489 – 24 hours a day, seven days a week

D-Link Technical Support over the Internet:

<http://www.support.dlink.com>

D-Link®
BUILDING NETWORKS FOR PEOPLE